



# SUCCESS STORY

## ASSET INVENTORY AT HEIDELBERGER DRUCKMASCHINEN

### HEIDELBERG

With a global market share for sheetfed offset printing machines of more than 40 percent, Heidelberg Druckmaschinen AG (Heidelberg) is the world's leading solution provider for the print media industry. Heidelberg is most active within the major OECD industrial regions and is expanding its involvement within growing markets such as Asia and Eastern Europe. With development and production sites in five countries and some 250 sales offices world-wide, the company offers services to more than 200,000 customers around the globe. As of March 31, 2008, the Group employed 19,600 people worldwide.

It is highly probable that the keywords "asset inventory" immediately make you think of the following: pile upon pile of files and every folder jam-packed with lists of never-ending figures. Or employees with pencils and bulky lists running from machine to machine and from PC to office chair to then jot down every inventory number by hand. Or it makes you think of the time it will take to update each individual record in your SAP system at the end of it all.

All this is now a thing of the past. The Freudenberg IT (FIT) Asset Inventory System transforms the previously nerve-wracking "asset inventory" into simple child's play. The automated overall solution optimizes error-prone and extremely unprofitable workflows for capturing, reconciling, and processing asset portfolios.

#### **What does the FIT Asset Inventory System offer you?**

The advantages are numerous. It saves you time and money. And it makes you completely flexible. It's up to you whether you decide on a universal census, on a specific cutoff date, or carry out a rolling inventory at any time. The inventory is always simple and fast and ties up little personnel resources.

State of the art technology and standardized interfaces enable you to optimally integrate the Asset Inventory System into your existing data processing system and organizational workflows.

All the software and hardware required is naturally available in one stop. The FIT Asset Inventory System increases your inventory results' timeliness, quality, and significance. Quickly assigning new cost centers, business locations, or rooms when relocating assets is no problem, meaning that you always have a simple and convenient overview of your fixed assets.

This also allows you to reliably make plans and calculations. For there's one thing you should never forget: your asset inventory results determine your write-off options and thus, in turn, your profit.

#### **How does the Asset Inventory System work? Simply and securely!**

You attach barcode labels containing the asset master data to all your assets. The thermo transfer printer needed to print the labels is provided by FIT. You then conveniently scan in your asset data using a handy little portable laser terminal – and this completely free of transposed numbers. You can even annotate the data straight after scanning them in. The data transfer station

delivered at the same time transfers everything into your PC's asset inventory system.

Now you can view inventory results at the push of a button. The software posts any differences and enables you to immediately revise the inventory data. If necessary, some cost centers and business locations can be quickly changed, the inventory data released, and retransferred back into the Asset Inventory System. And that's all!

This transfer is reliably and securely taken care of by the certified interface to SAP; after all, you want even all office chairs to be accounted for. Every asset management system can be linked via the open interface on a file basis.

### The Project at Heidelberger Druckmaschinen AG:

Everything started in 2000 with a pilot project at Heidelberger Druckmaschinen Vertrieb Deutschland GmbH, located in Kornthal-Münchingen, Germany. In the course of this project, the inventory of the entire organization with over 1,500 assets was renewed. The actual installation and startup of the system then took place in 2001 in the largest production facility in Wiesloch, Germany. Since then, Heidelberger Druckmaschinen AG is working successfully with this new solution.

### Uwe Jüttner, Head of Asset Accounting, Heidelberger Druckmaschinen AG:

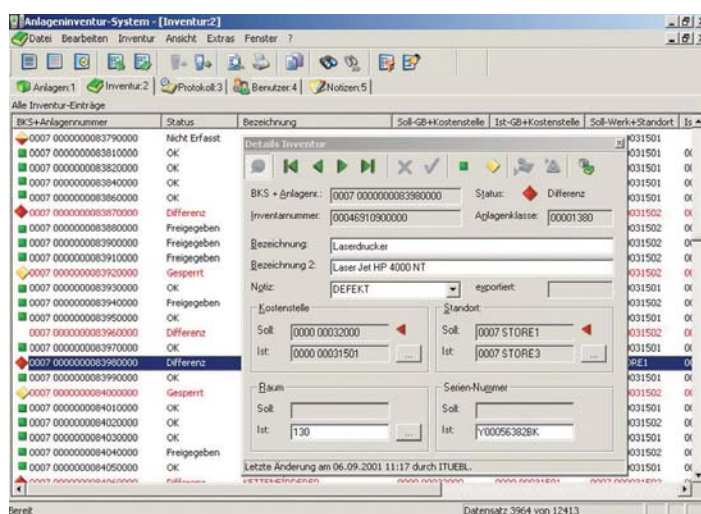
*"Adopting the SAP-based Freudenberg IT Asset Inventory System has enabled us to reduce the time, personnel, and financial resources usually required for the annual asset inventory by two-thirds."*

*The quality of the asset management has been improved due to the noticeably increased accuracy of the inventory results coupled with flawless documentation. The system has made a positive impression on us and will therefore be extended to other companies within the Heidelberg Group."*

### Already well established: Freudenberg IT and its Asset Inventory System

The Asset Inventory System developed and constantly improved by FIT is well established on the market and has more than proved itself with renowned customers both at home and abroad. FIT manufactures the software for its successful system in-house, meaning that your individual requirements can be taken into consideration.

In short: The Freudenberg IT system is the automated overall solution to your complete asset inventory.



### Freudenberg IT

Höhnerweg 2-4  
69469 Weinheim  
info@freudenberg-it.com

Fon: +49 (0)62 01 80 80 00  
Fax: +49 (0)62 01 88 80 00  
www.freudenberg-it.com

