

# SAP NETWEAVER PORTAL

INFORMATION IN A NUTSHELL



# EXECUTIVE PORTALS



How can a portal make your life easier? Software such as the SAP NetWeaver Portal grants you personalized access to precisely the information you need to be successful in business – be it personnel data from your company’s human resource system, performance indicators delivered by a Business Information Warehouse, or up-to-date customer data from a CRM application.

Freudenberg IT helps you conduct a structured analysis of your company’s current workflows, and assists you in transforming them into integrated, portal-based business processes. Highly qualified consultants will support the implementation project, covering aspects such as security, single sign-on, pre-configured portal content, ERP integration, development of Java iViews, and knowledge management.

Experience has shown that each employee uses a unique set of skills when dealing with portal issues. Our consultants have proven their know-how in numerous portal projects, including the Freudenberg Group’s own corporate portal roll-out.

Being among the first companies to adopt the SAP NetWeaver Portal, Freudenberg IT offers its customers viable solutions geared towards a wide range of business needs. Based on a thorough analysis of your company’s specific requirements, we design your individual solution scenario. For implementation, we use pre-configured portal contents as delivered by SAP Business Packages, as well as our own iView applications.

## Content, Content, Content

A portal can only be as good as the content it is based on. What counts is that the information distributed via the portal is always up-to-date and that it reaches its target audience.

You probably are familiar with the following questions:

- Can your company’s executives control their budgets based on computerized business rules? Are they able to spot potential bottlenecks?
- Do your sales and marketing managers always have access to the latest facts and figures on customers, revenues and competitors?
- How do you file memos, notes and manuals? How do you structure and retrieve information?
- How do you organize project work? How can you communicate and cooperate most effectively with your customers and partners?



According to our experience, companies can greatly accelerate and simplify access to services and software applications by setting up an enterprise portal. Your senior management will welcome this improvement. Let us show you how to get there!

### **One Size does not fit all**

Each portal project requires a different approach. Long-term benefit has to be guaranteed, your implementation partner has to understand your business strategy and apply proven technology. In the first phase of your project, we will assist you in analyzing your IT infrastructure by applying our portal matrix, and show you how to use our "iView puzzle".

### **A Portal is a Journey, not a Goal**

Bearing this in mind, we focus on specified guidelines, such as the tasks and responsibilities of your executive staff or a specific line of business.

We use dynamic specification lists to quickly translate your requirements into results.

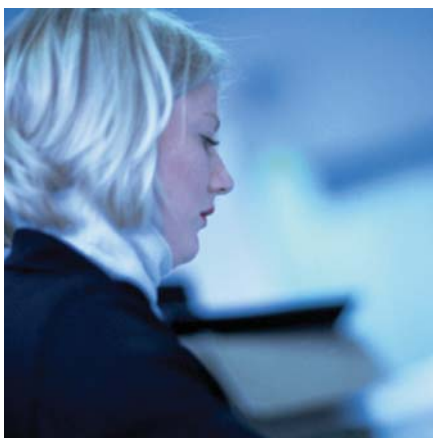
Success will be visible and tangible from the outset. This approach will keep your project transparent and manageable at any stage. In just a few weeks the deployment will be completed.

### **Technology, Users, Organization**

Numerous aspects have to be considered when implementing a portal. Setting up a single sign-on mechanism that enables the use of only one password for any corporate software system is a demanding task, as it must be built around a bullet-proof security policy. All applications in use have to be integrated into the portal, and interfaces linking the portal to databases and servers are needed. On top of this, your infrastructure might also need to be adjusted, including firewalls and mobile connections.

And yet there is more to an enterprise portal than hardware and software installation. Even more important are the people using it. They are the ones who look, communicate and interact beyond any company borders.





### Necessary factors for successful executive portal deployment:

- preparatory one-on-one interviews
- requirements identification workshops
- developing plausible solution approaches
- integration options, content recommendations
- a structured roll-out model
- project management, controlling, reviews
- fast implementation
- development and introduction of an operations manual

### The Freudenberg Group deploys the SAP NetWeaver Portal internationally.

- All implementation services are delivered by an expert partner.
- The executive portal is adjusted according to your company's specific requirements.

- Freudenberg IT is a certified "Special Expertise Partner" for the SAP NetWeaver Portal.

### An extract of our references



## THE RIGHT FIT FOR YOUR BUSINESS

If you would like to learn more about portal implementation with Freudenberg, or discuss your own project ideas, please do not hesitate to contact us. We would be more than happy to visit you at your company.

### Freudenberg IT

Höhnerweg 2-4  
69469 Weinheim · Germany  
info@freudenberg-it.com

Fon: +49 (0)62 01 80 80 00  
Fax: +49 (0)62 01 88 80 00  
www.freudenberg-it.com

