



WAREHOUSE AND TRANSPORT MANAGEMENT

What you need:

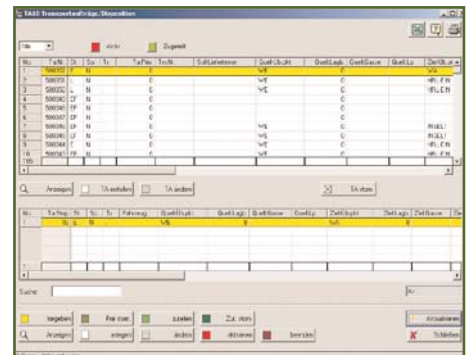
- Efficient warehouse management
- Optimized transport control
- Optimal support of your logistics processes

The solution: Adicom® Warehouse and Transport Management

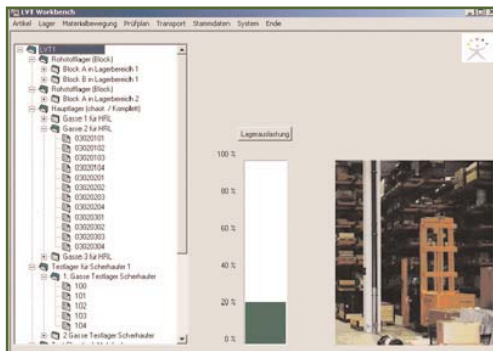
- Stock management at all levels (storage location, bin location, etc..)
- Strategies for placement in and out of storage
- Paperless picking and supplies management
- Real-time inventory
- High flexibility in the administration and expansion of your warehouse structures
- Transport control with integrated fork lift control system for warehouse and production
- Connection of heterogeneous transport systems (conveyors, AGV, rack feeder, etc.)
- Quality assurance and support of the documentation requirements

Space as a success factor...

You will be able to optimize as many warehouse types and sizes as you wish with different strategies. And you can respond easily and flexibly to changes in your company. The high transparency of the material stock and the warehouse organization prevents shortfalls in your stock and reduces time for stocktaking.



Shop floor layout



Warehouse topology & efficiency



Transport order disposition



Time as a success factor...

Warehouse planning with Adicom Warehouse and Transport Management allows you to significantly minimize the storage time between delivery and dispatch.

The integrated transport control also shortens the times and routes for the internal transport of goods. You can therefore ensure a timely and efficient re-use of stored materials.

Your potentials for success:

- Increase in on-time deliveries
- Substantial cost reduction
- Clear reduction of lead time for stock orders
- On-time supply of production and shipping
- Optimal utilization of deployed transport operating resources
- Tracking and tracing material flow
- Prevention of shortfalls
- Minimizing of deadhead capacity journeys

Integration possibilities with the Adicom Software Suite

The Adicom Software Suite offers a solution and services package for the seamless capture, planning, and management of all resources, such as personnel, materials, machinery, and operating resources. Its modular structure allows it to be used efficiently, either as a whole suite, or just as individual components.

Adicom Warehouse and Transport Management offers you a means to efficiently coordinate and obtain information on upstream and downstream processes (purchasing, production control, sales, etc..).